

Introduction to the Accountable Community for Health Model

ERIN CRELEY (SHE/HER)

DISTRICT DIRECTOR, ST ALBANS OFFICE OF LOCAL
HEALTH

VERMONT DEPARTMENT OF HEALTH



Questions we'll cover

What is an Accountable Community for Health (ACH), and what is the value behind it?

What components does it pay attention to regarding how to strengthen the linkages between community and clinical care?

What is an accountable community for health (ACH)?

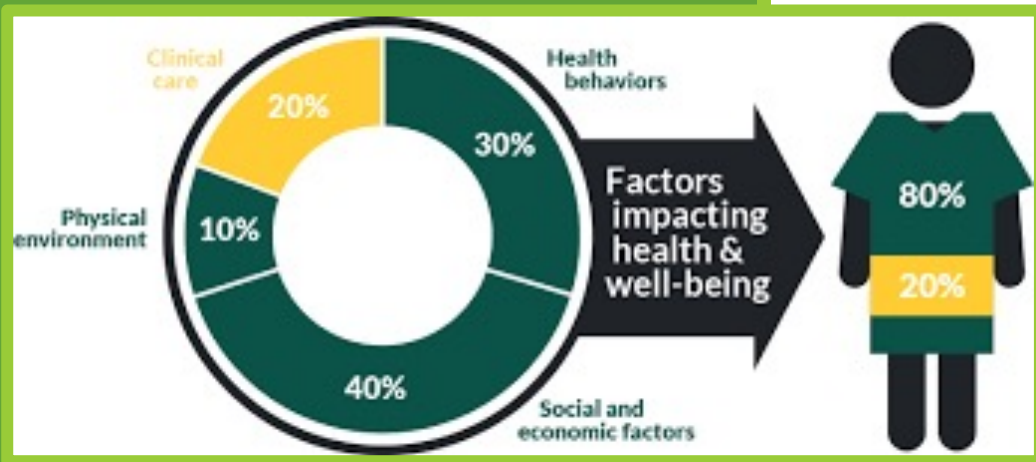
- **What:** A model for collaboration that engages all the levers of population health – social circumstances, economic conditions, environment, behavior, and more.
- **Who:** Cross-sector community membership from health care, social services, and other service providers who commit to take responsibility for the health of the entire population in a defined geographic area.
- **Origin:** Since 2015, the Prevention Institute, a national nonprofit, has studied community initiatives and collaboratives, and in their studies defined the Nine Core Elements that define an ACH

Source: State of Vermont, Dept of Vermont Health Access, The Blueprint for Health, “Vermont ACH 101”
<https://blueprintforhealth.vermont.gov/about-blueprint/accountable-communities-health>

The ACH Nine Core Elements

1. Mission	Why
2. Multi-sectoral Partnership	Who
3. Integrator Organization (Backbone)	
4. Governance	How
5. Shared Data and Indicators	
6. Strategy and Implementation	
7. Community Member Engagement	
8. Communications	
9. Sustainable Financing	

The ACH model helps communities strengthen existing collaborations and enhance their effectiveness through a focus on nine core elements.



ACH Areas of Focus

- The health and well-being of the entire population in its defined geographic area
- Integration of high-quality medical care, mental and behavioral health services, and social services for those in need of care
- Supports community-wide prevention efforts, activities that seek to improve the community conditions that determine much of health *in the first place*, to reduce disparities in the distribution of health and wellness.

Aligning prevention and intervention efforts is key to success.

Adapted from: Prevention Institute, "ACH Fact Sheet"

<https://www.preventioninstitute.org/sites/default/files/publications/ACH%20Fact%20Sheet.pdf>



Using ACH to address inequities

The ACH can be used to bring together the institutions with people from the community to address institutional inequities.

A Public Health Framework for Reducing Health Inequities

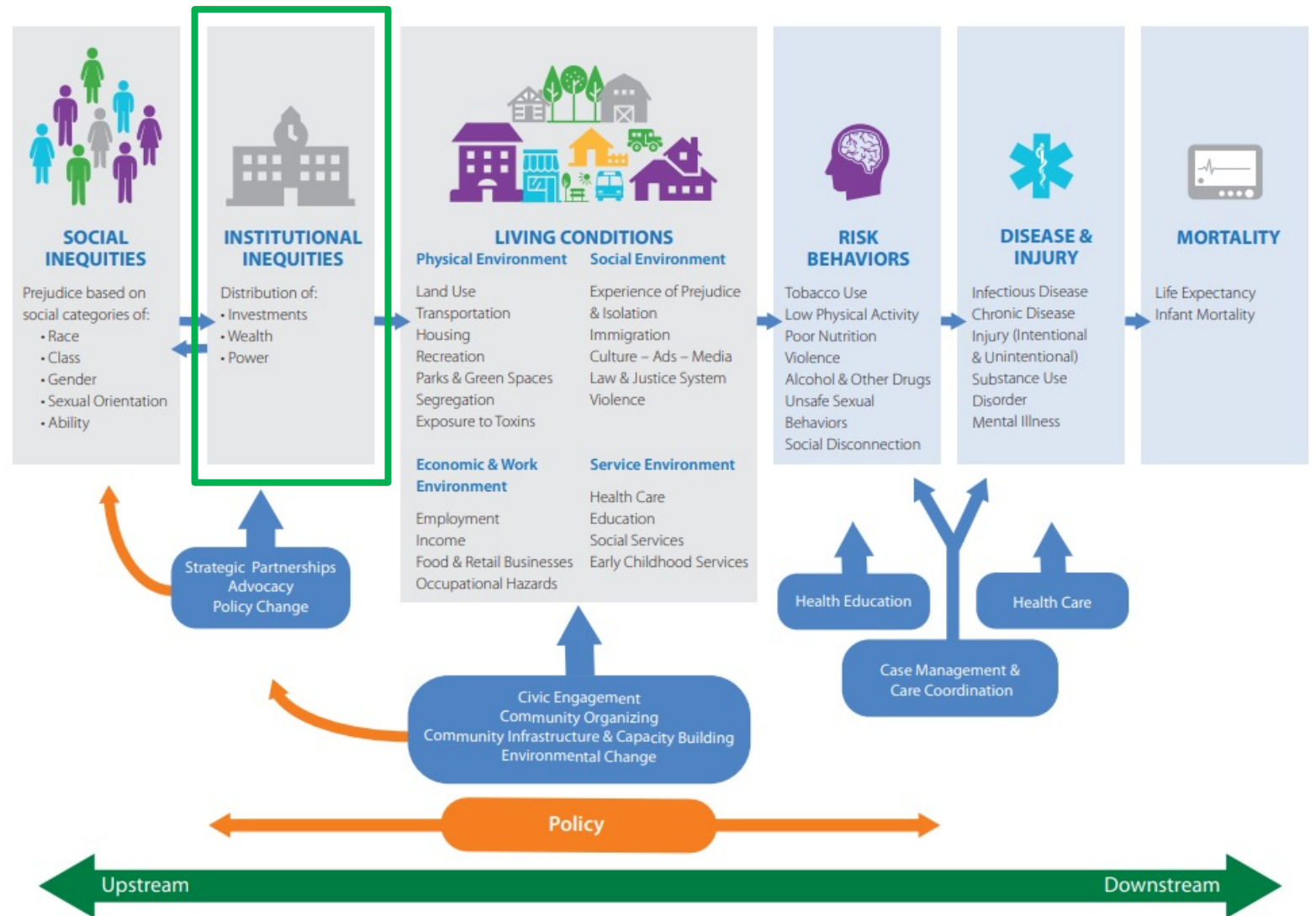
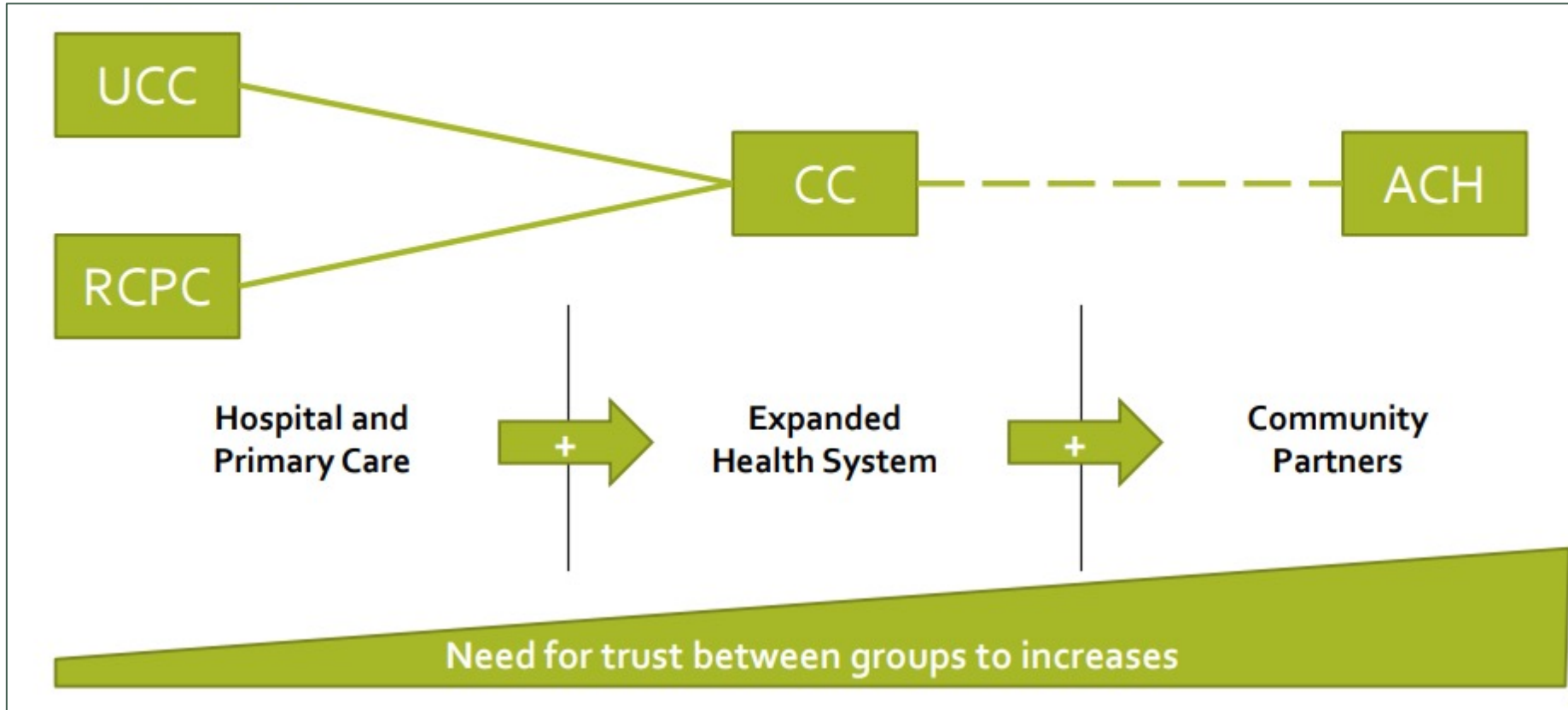


Image from: Community Commons, <https://www.communitycommons.org/entities/90c7e4c8-27c0-4968-98cd-22d05976df88>

ACH in Vermont: Moving towards inclusion and trust



Source: State of Vermont, Dept of Vermont Health Access, The Blueprint for Health, "Vermont ACH 101"
<https://blueprintforhealth.vermont.gov/about-blueprint/accountable-communities-health>

What is Unique about the ACH Model?

- Engaging a broad set of partners beyond healthcare, to include the community, behavioral and social services, public health, and other organizations and sectors
- Focusing on the health of all residents in a geographic area rather than just a patient panel
- Bring together major healthcare and other service providers across the geographic area to operate as partners, not individual actors
- Realigning multiple resources that can be applied to ACH-defined objectives in mutually reinforcing activities
- Explore the potential for braiding funding in order to sustain collaborative efforts.



Adapted from: Prevention Institute, "ACH Fact Sheet"

<https://www.preventioninstitute.org/sites/default/files/publications/ACH%20Fact%20Sheet.pdf>

Questions?

Thank you

Erin Creley | she/her

Public Health Services District Director

St. Albans Local Health Office

27 Federal St, Suite 201, St Albans, VT 05855

Erin.Creley@vermont.gov

Office: (802) 527-5582

Mobile: (802) 355-8030

<https://www.healthvermont.gov/local/st-albans>

