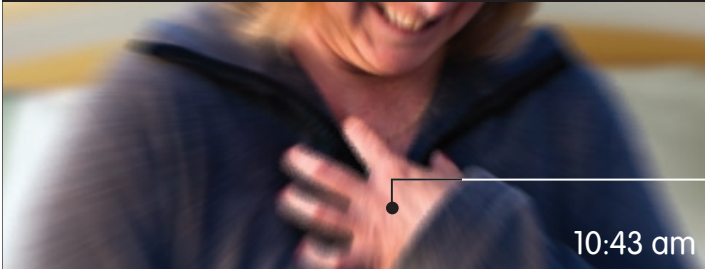




*we do that here.*



10:43 am



10:58 am



Brenda Hayden, Georgia

## { Collaboration }

One morning last fall, Brenda woke up in pain. "It felt like an elephant was sitting on my chest." The ambulance was soon on its way to our Emergency Department where she was treated and sent on to Fletcher Allen Health Care. From arrival at NMC to Fletcher Allen's Cardiac Cath Lab took just 43 minutes. "Curtis on the ambulance crew and the ED folks at NMC knew exactly what to do; the overall teamwork was fantastic." Brenda's now in NMC's Cardiac Rehab program and recovering nicely. "I'm appreciating the little things -- like being able to take short rides on my bike again."

For more information about our services call Janet at 802-524-1280 or visit us online at [www.NorthwesternMedicalCenter.org](http://www.NorthwesternMedicalCenter.org).



Saint Albans, Vermont